

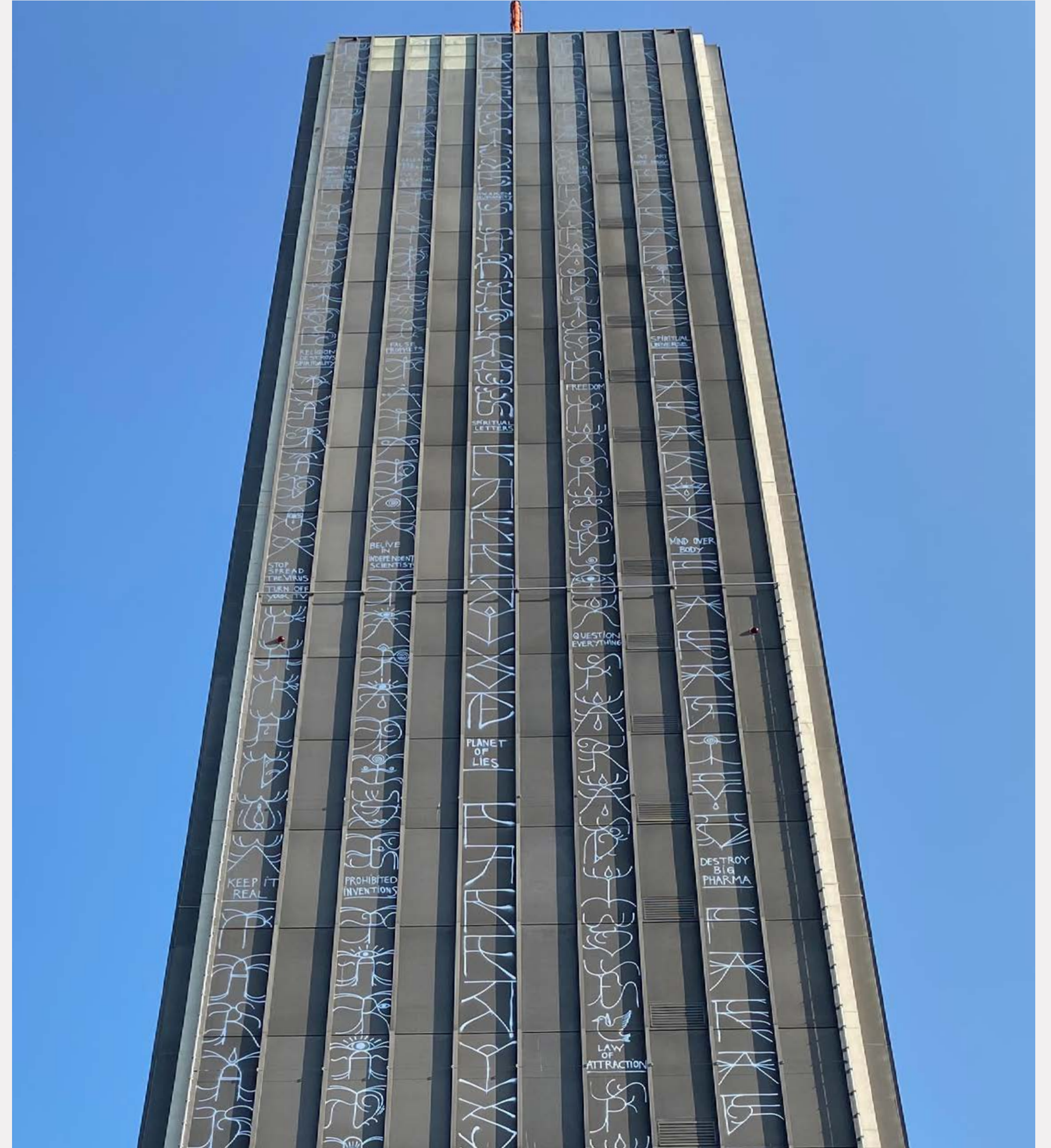
# FACTSHEET

MIX TEMPORARY SPACES

ART INVEST

*plut.*

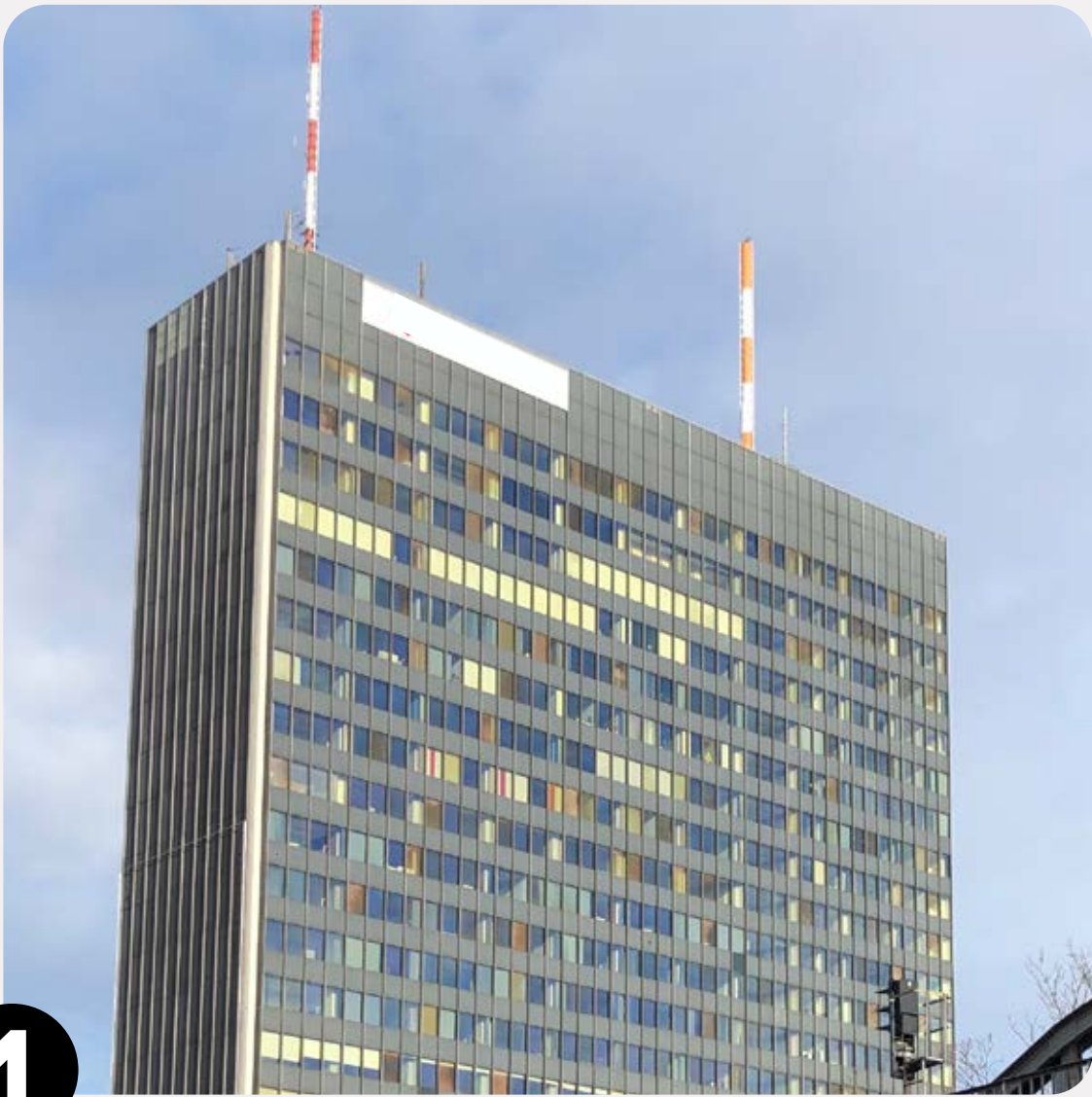
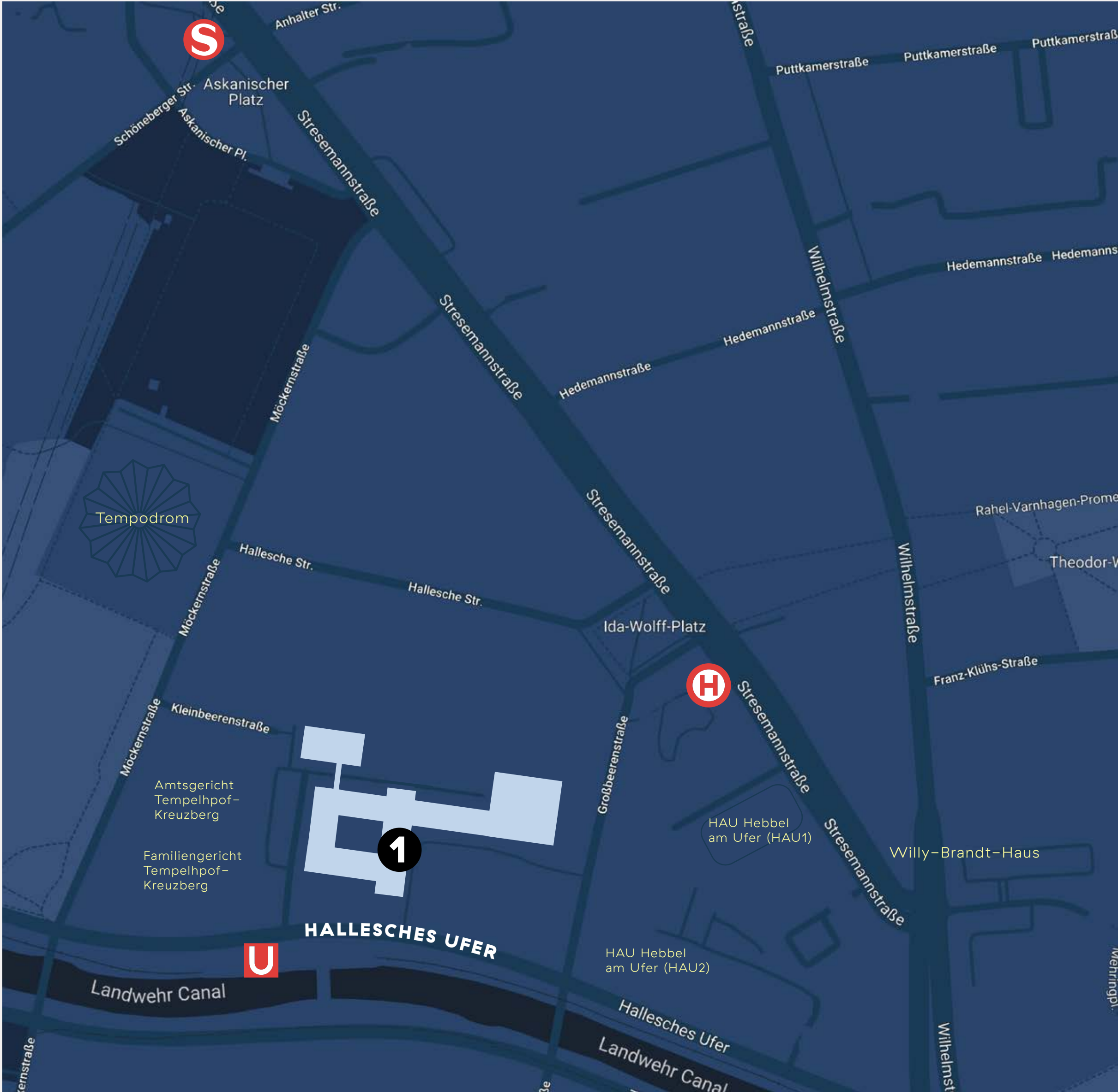






The old „Postbank“ skyscraper gleams between Potsdamer Platz, Gleisdreieck Park and Mehringdamm. Due to its height, it is a real catcher in the neighborhood. Since 2020 we have the opportunity to use this location under the name **MIX Temporary Spaces** as an event location for cultural events and more. The highlight of the building is the event area on the 22nd floor, which offers a spectacular view. The spaces on the remaining floors are ideal for TV productions, as the rooms vary in size and can be used individually. Fashion shows, film shoots or exhibitions – everything is possible!

LOCATION / CONNECTION / HALLESCHES UFER 40-60,10963 BERLIN



1

MIX TOWER



**U7 / U 1 Möckernbrücke** 1 Min. by foot



**S1, S2, S25 und S26 Anhalterbahnhof** 9 Min. by foot

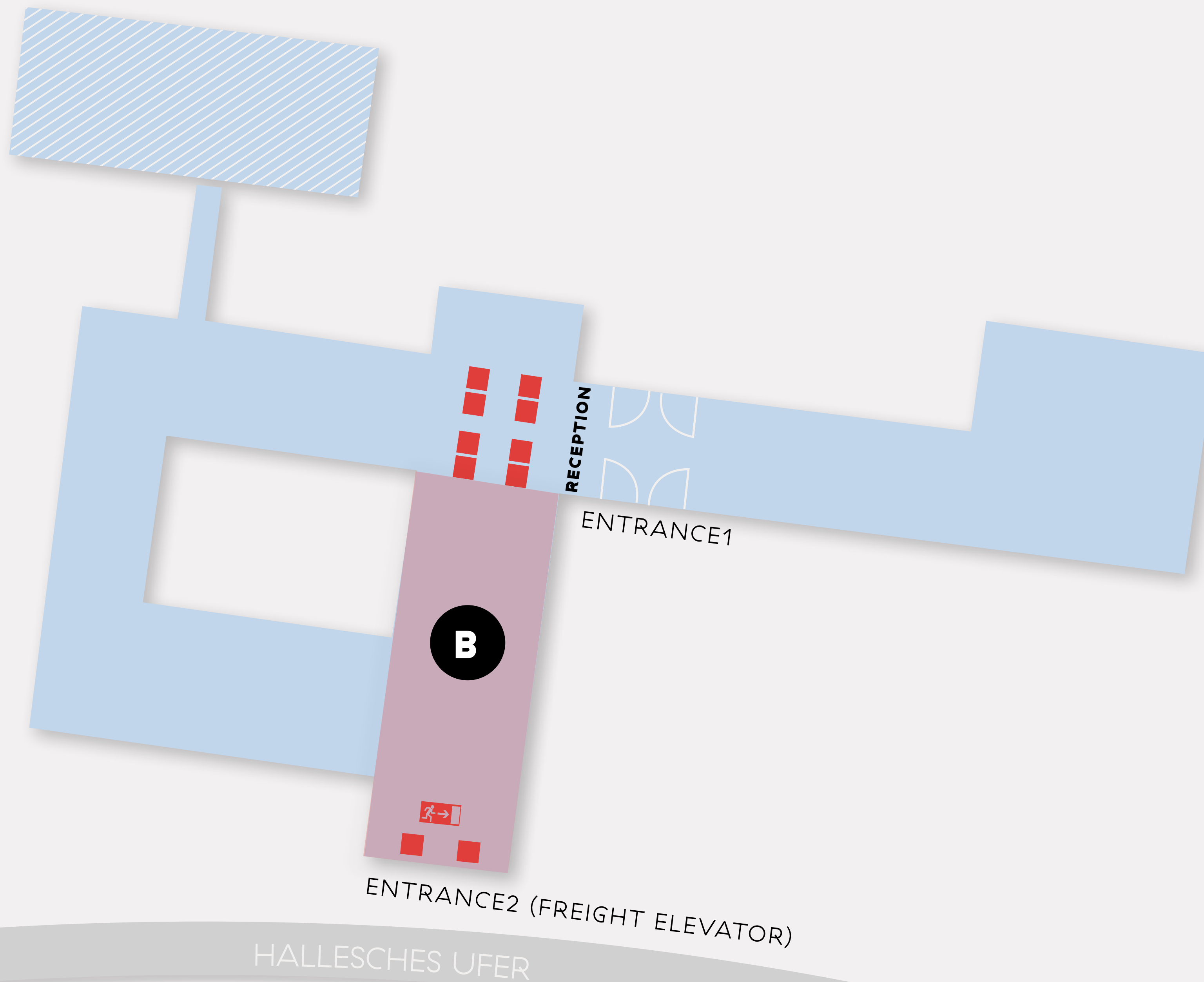


**M41 Willy-Brandt-Haus** 10 Min. by foot


# LOCATION

GROUND PLAN & ROOM OVERVIEW

# A | LOCATION OVERVIEW

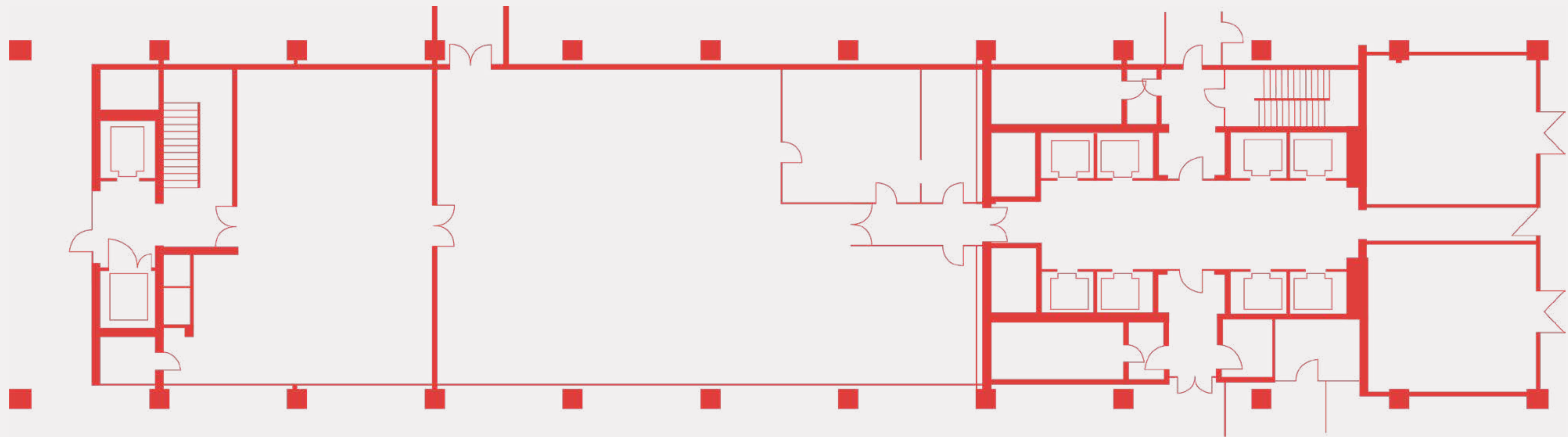


- B** TOWER  
for rent:
- 1st floor approx. 366 m<sup>2</sup>**
  - 15th floor approx. 1000 m<sup>2</sup>**
  - 17th floor approx. 1000 m<sup>2</sup>**
  - 18th floor approx. 1000 m<sup>2</sup>**
  - 21nd floor approx. 1000 m<sup>2</sup>**
  - 22nd floor approx. 1000 m<sup>2</sup>**

 Elevators



**B | LOCATION**  
TOWER 1ST FLOOR





**B | LOCATION**  
TOWER 1ST FLOOR / ROOMS



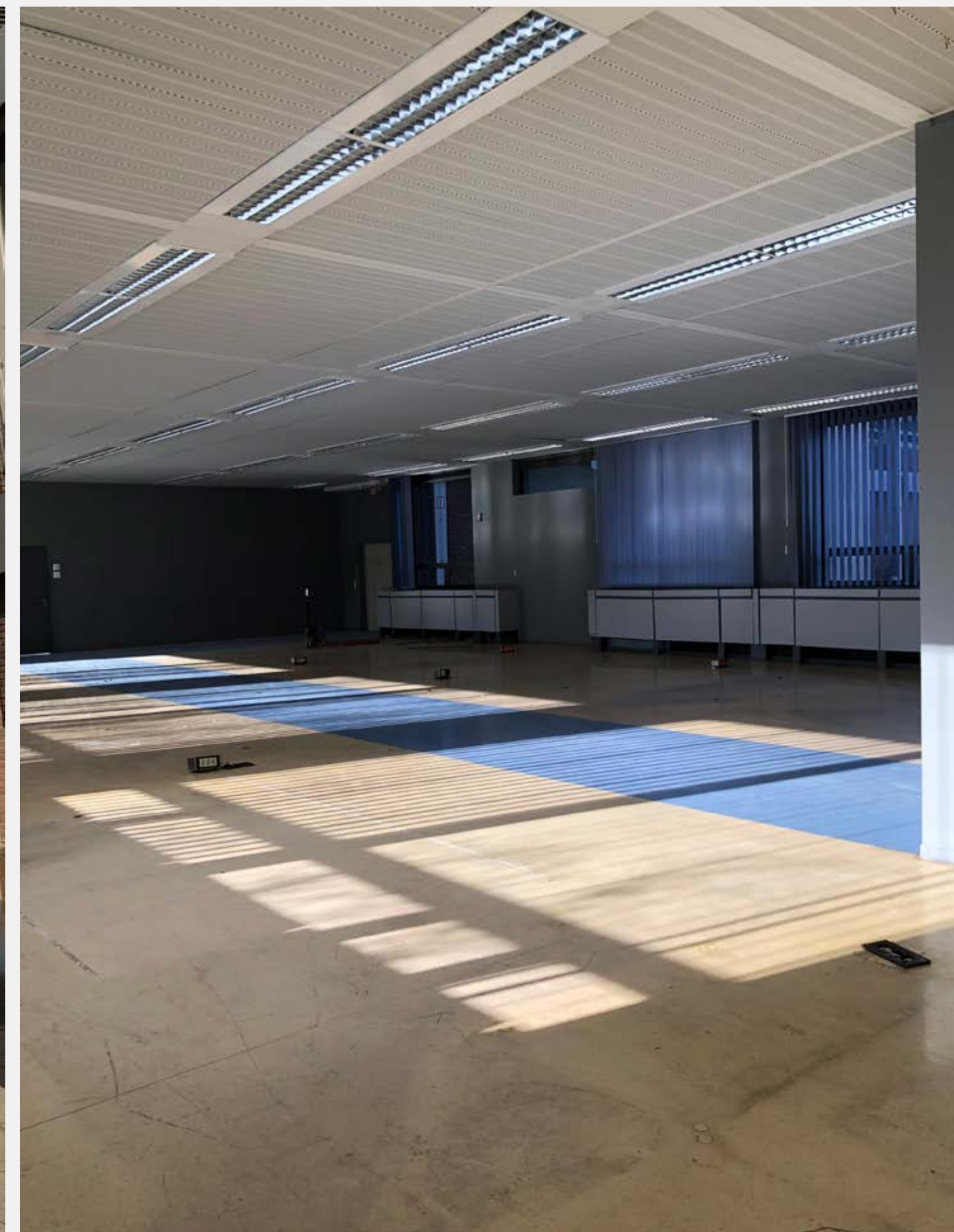
PANORAMIC SHOT OF ONE OF THE ROOMS



**B | LOCATION**  
TOWER 1ST FLOOR / ROOMS



EXTERIOR VIEW



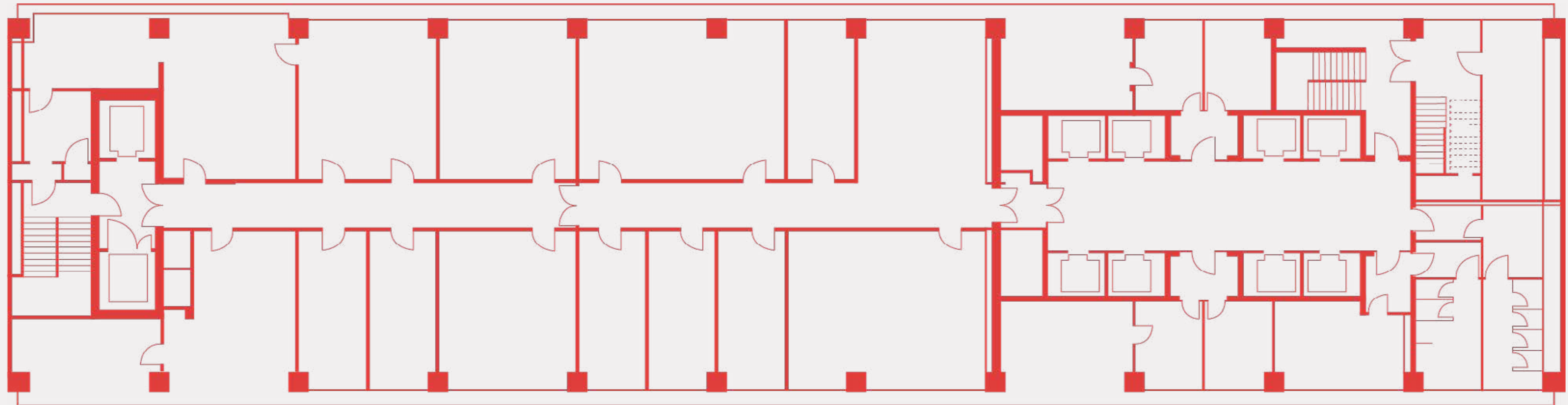
CORRIDOR ON 1ST FLOOR





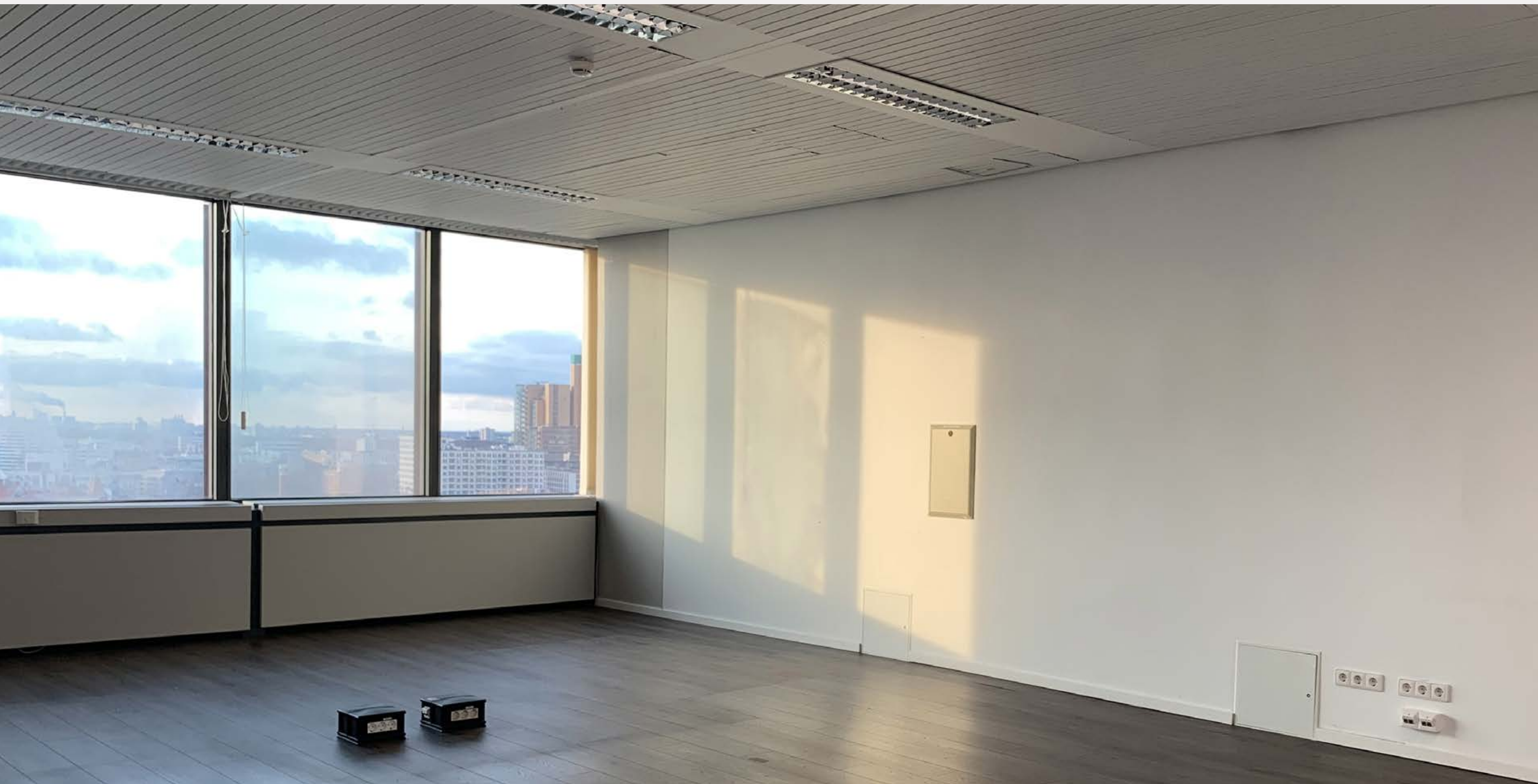
## LOCATION

TOWER 15, 17 AND 18TH FLOOR / ROOMS

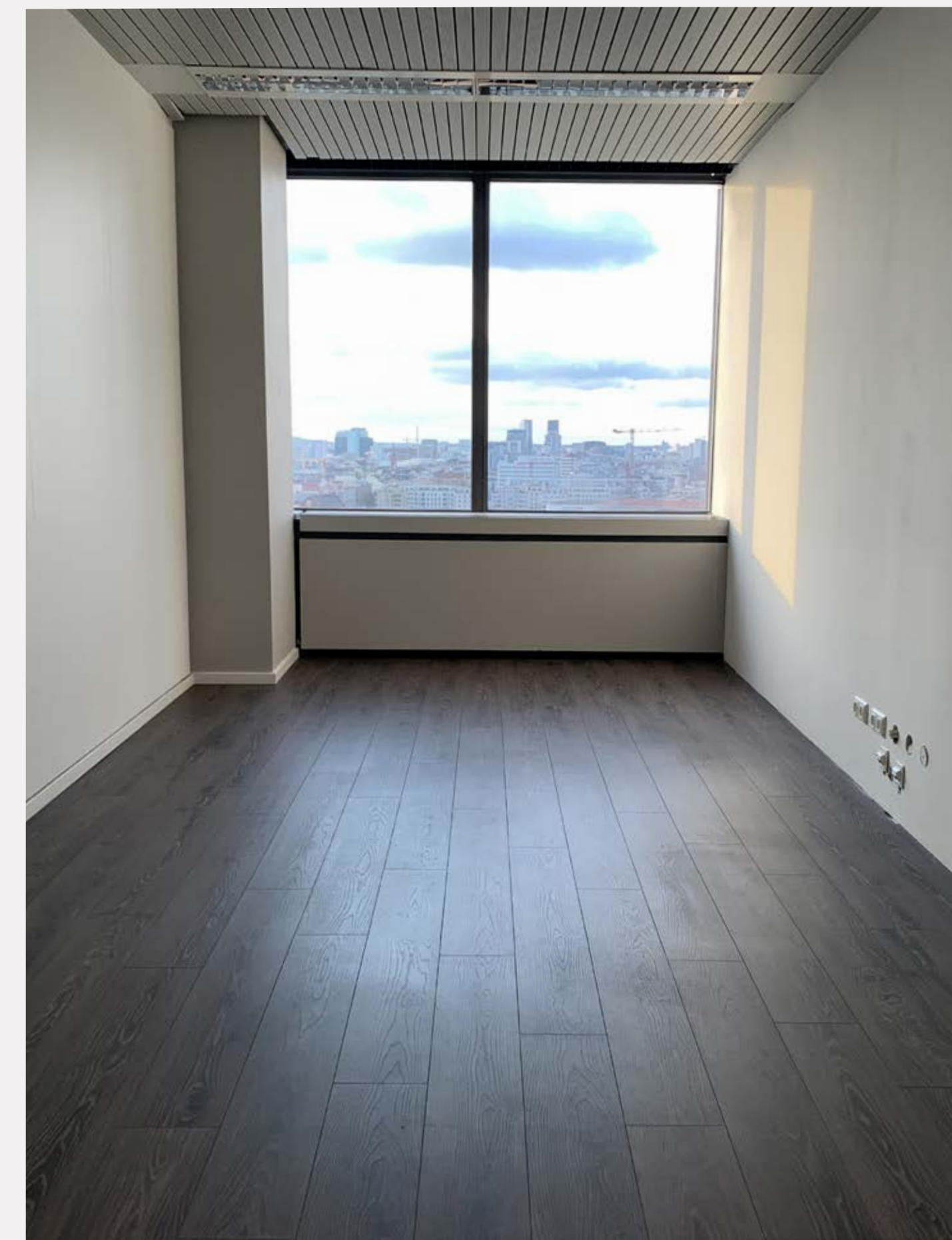




**C | LOCATION**  
TOWER 15, 17 AND 18TH FLOOR / ROOMS



VIEW





**C** **LOCATION**  
TOWER 15, 17 AND 18TH FLOOR / ROOMS



HALL



12 TO 15 SEPARATE ROOMS



**D | LOCATION**  
TOWER 21ST FLOOR / ROOMS





**D | LOCATION**  
TOWER 21ST FLOOR / ROOMS



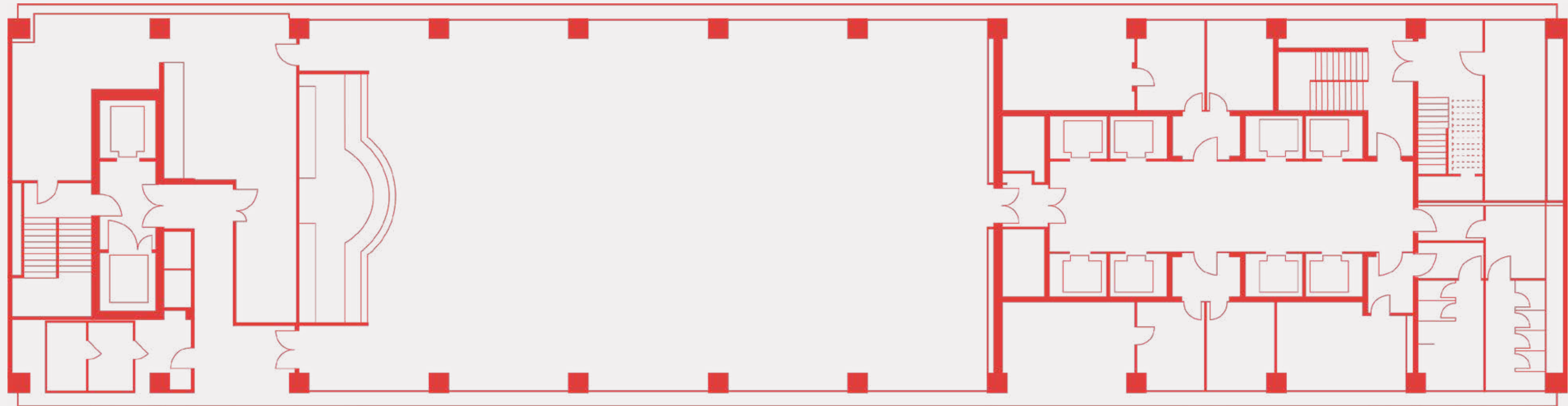
VIEW SUNSET





## LOCATION

TOWER 22ND FLOOR / ROOMS





**E | LOCATION**  
TOWER 22ND FLOOR / ROOMS



VIEW



VIEW OF THE OLD CANTEEN



**E | LOCATION**  
TOWER 22ND FLOOR / ROOMS



PANORAMA VIEW



**E | LOCATION**  
TOWER 22ND FLOOR / ROOMS



VIEW FROM THE OLD CANTEEN



VIEW AT THE OLD CANTEEN



# REFERENCES

GLUT



**GLUT Berlin** is an agency for design, event and digital media. We offer you a professional network consultants, strategists, planners, designers, designers, technicians and developers. Individually, for each project we put together teams whose bundled competence offers you the entire range of services of a professional brand and project communication.

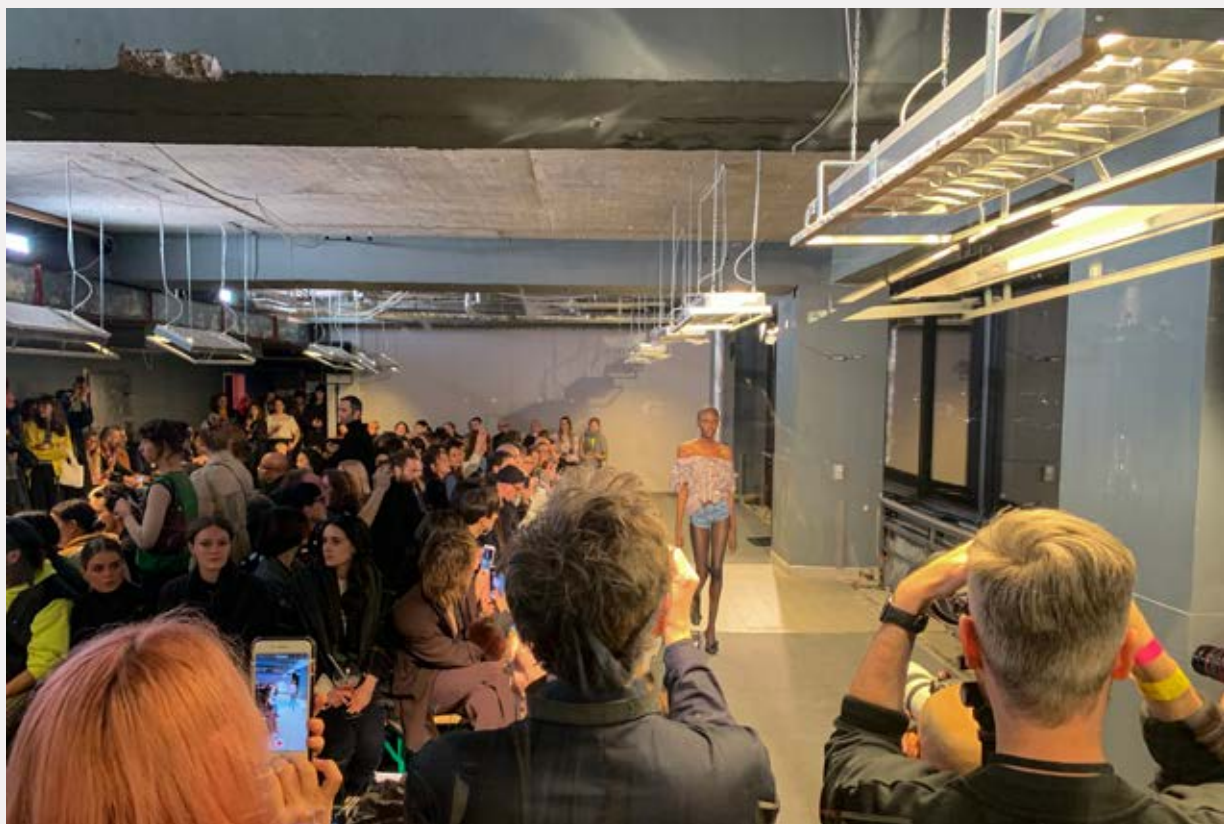
**GLUT Berlin** is known for individual concepts, innovative designs, effective communication measures, a detailed cost-effective planning and realization of your projects.



**GLUT REFERENCES** / BERLIN FASHION WEEK / LOU DE BÉTOLY

Costumer LOU DE BÉTOLY  
Project type Fashion Show  
Location TOWER 21ST FLOOR

- + planning
- + creation
- + project management
- + admission management
- + sound & technology





**GLUT REFERENCES / DINNER / WHAT?! PROPTech**

Costumer JOIN CAPITAL

Project type WHAT?! PROPTech Dinner

Location Weinkeller in the former  
Böhmischen Brauhaus

+ planning

+ creation

+ project management

+ event naming & corporate design

+ implementation

+ decoration & construction

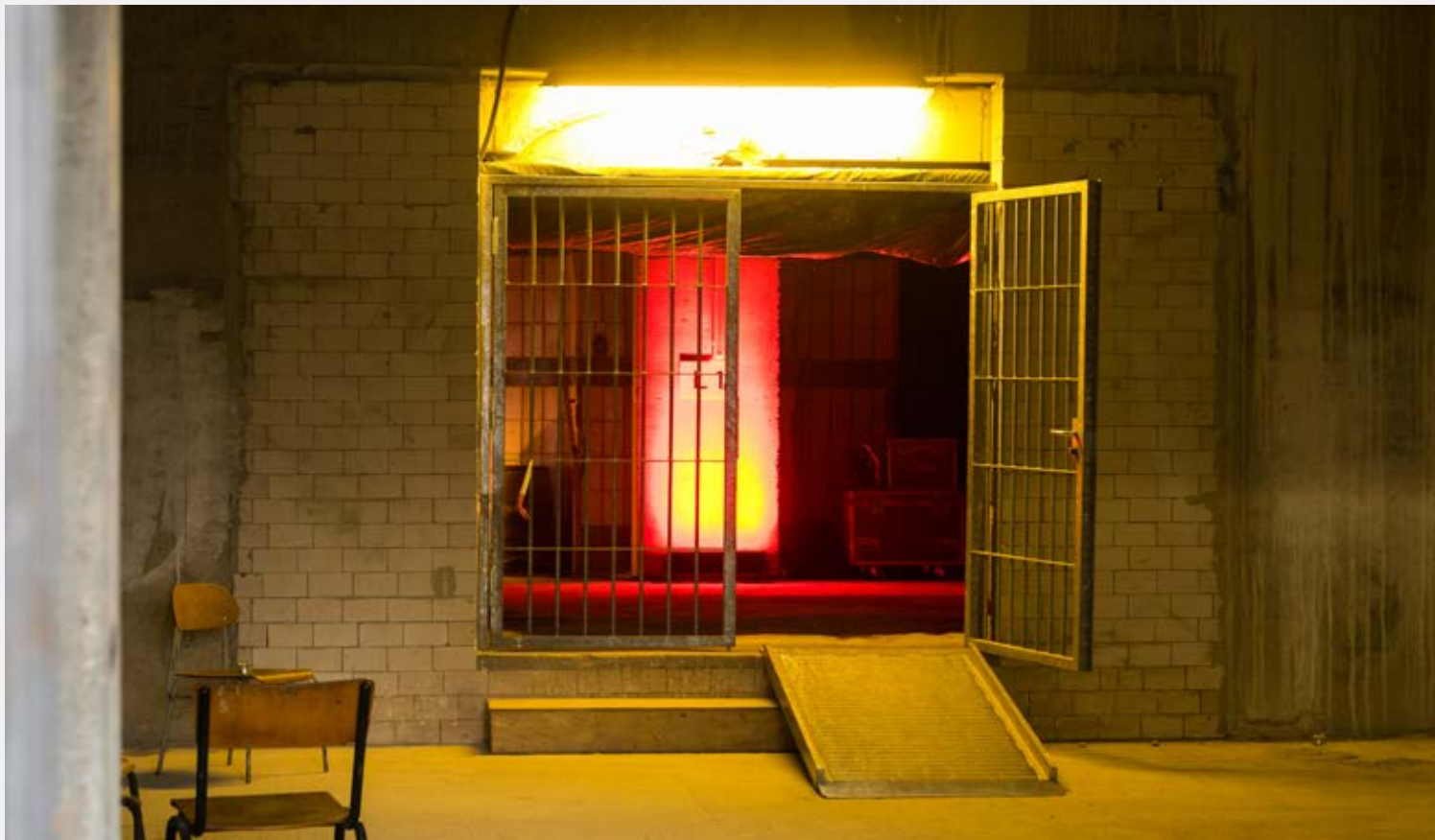
+ sound & technology

+ event Production

+ invitation & admission management

+ bar, service & catering

+ documentation





**GLUT REFERENCES / CHERRY VENTURES PORTFOLIO DAY 2018**

Costumer    Openers  
Project type    conference and dinner  
Location    SEZ

- + planning
- + creation
- + project management
- + sound & technology
- + documentation
- + implementation
- + admission management
- + bar, service & catering
- + decoration & construction





GLUT REFERENCES / TOP MANAGER CONFERENCE AND DINNER

Costumer   Porsche  
Project type   Top Manager conference & dinner  
Location   The Shelf

- + project management
- + bar, service & catering
- + planning
- + implementation
- + sound & technology
- + decoration & construction

- + production management
- + admission management





THANKS.





**CARLA DE OLIVEIRA**

Senior Event Management  
Concept Creation

[cdo@glut.berlin](mailto:cdo@glut.berlin)

+49.30.2091646-17



**LAURA SCHULZ**

Event Assistant

[ls@glut.berlin](mailto:ls@glut.berlin)

+49.30.2091646-11





GLUT Berlin  
UG + Co. KG  
Königsstadt–Brauerei Haus F  
Strassburger Str. 55  
10405 Berlin

Managing Director:  
Michel Gehring

phone +49.(0)30.209 16 46–0  
Fax +49.(0)30.209 16 46–29  
mail@glut.berlin  
www.glut.berlin

© Factsheet status from 02.02.2021  
All content and ideas in this concept are the property of glut.berlin. Reproduction, transmission or publication of the self-representation is not permitted without consultation with the owner.